



Sun Prairie in Motion: Delivering Accessibility to the Suburbs

April 16, 2025

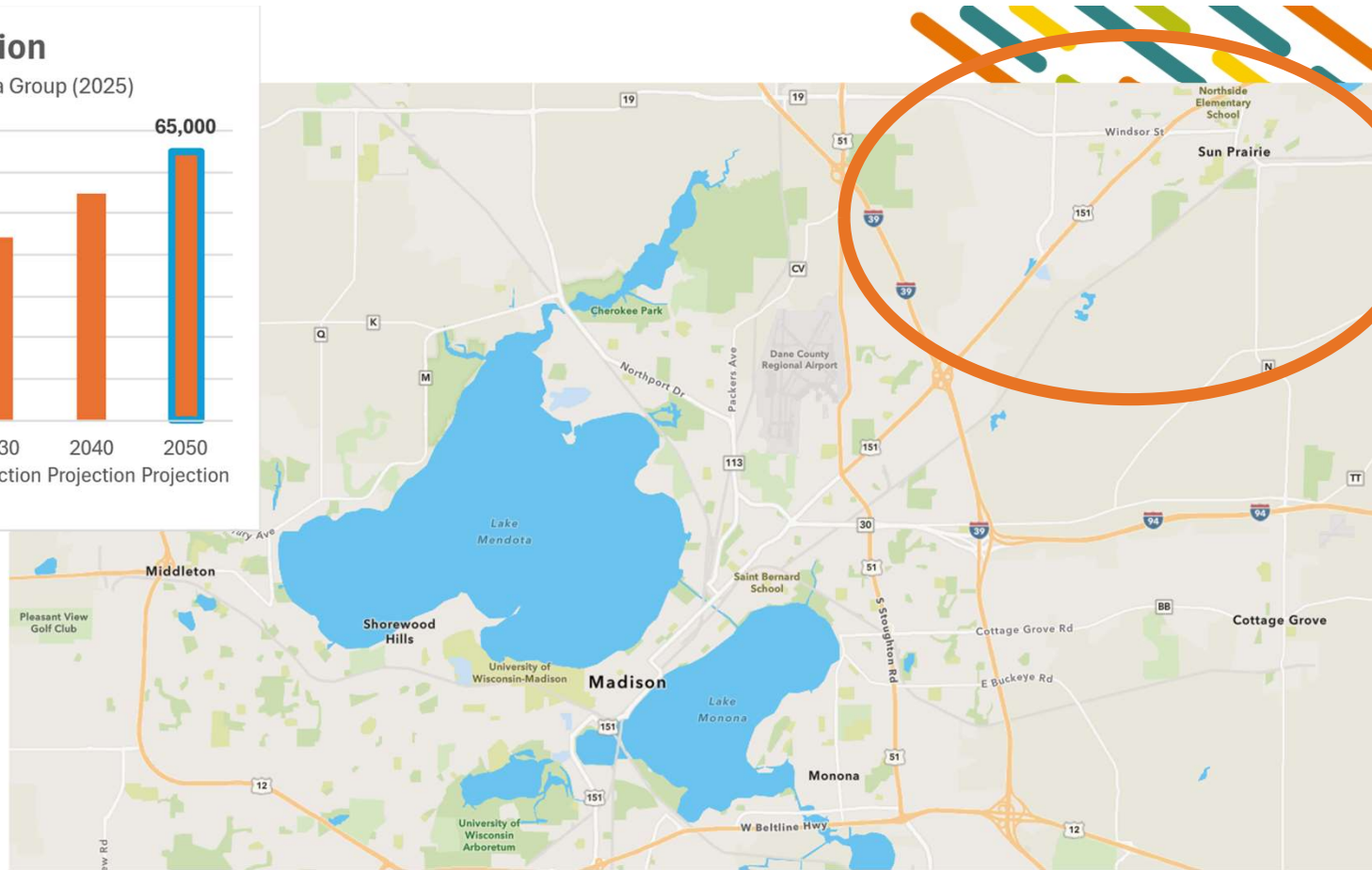
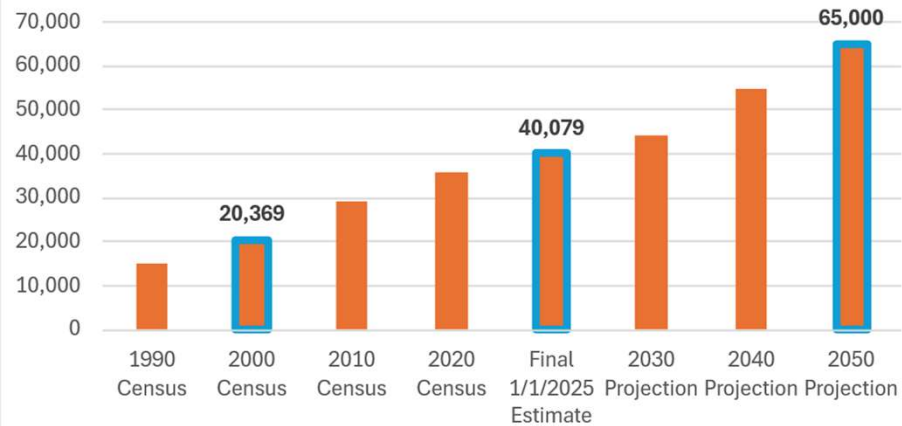


The background is a solid yellow color. On the left side, there are several light yellow, elongated, rounded rectangular shapes of varying lengths and orientations, some pointing towards the center. On the right side, there are several light yellow, curved, arc-like shapes of varying radii, some pointing towards the center. The overall effect is a modern, abstract graphic design.

From a Farm Town to a Suburban City

City of Sun Prairie Population

Sources: Wisconsin DOA (2025); CARPC Regional Data Group (2025)



Sun Prairie is

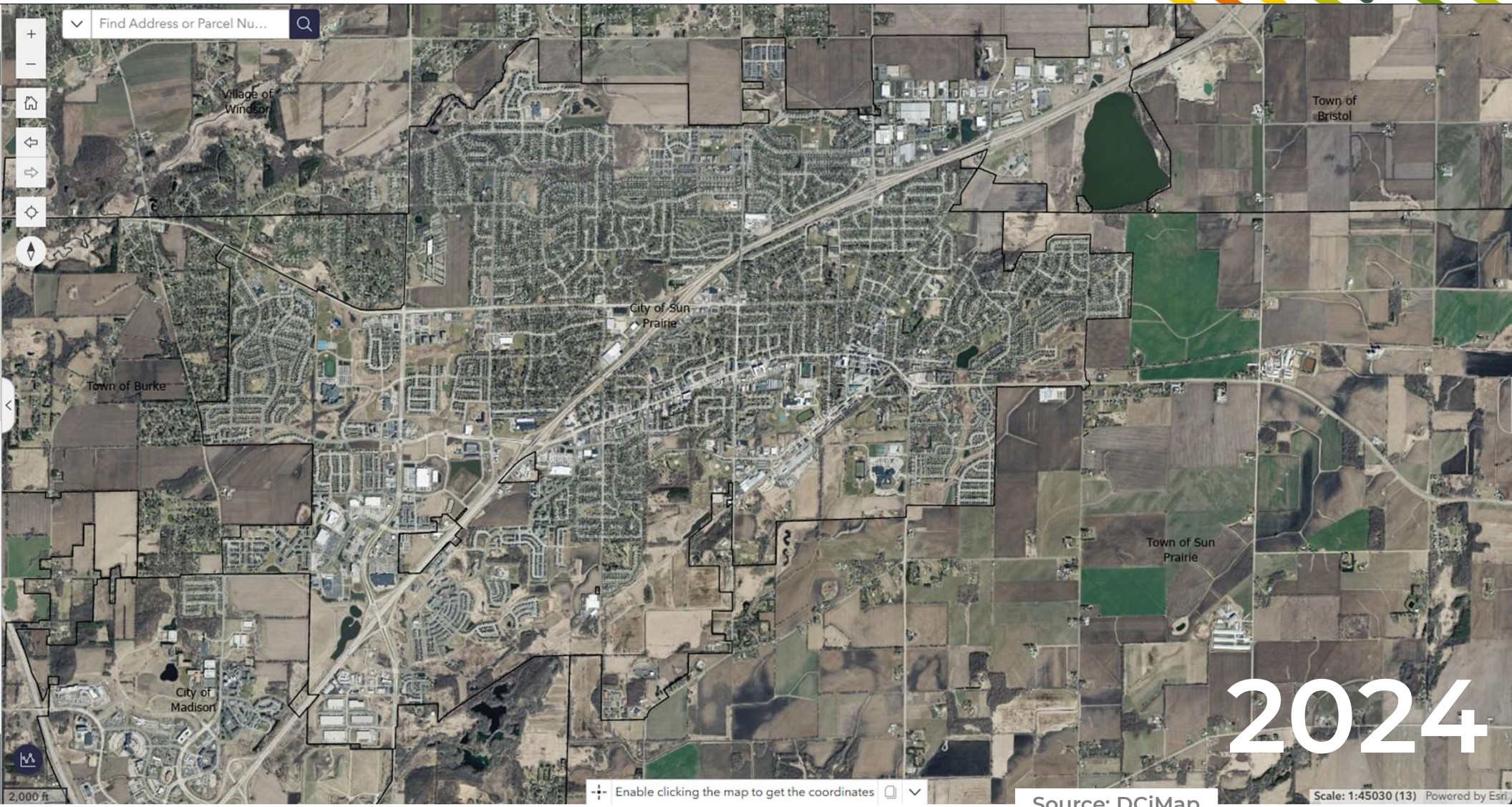
- Growing fast!
- Population has doubled since 2000!!
- Projected to add another 25,000 people in next 25 years



Enable clicking the map to get the coordinates

Source: DCiMap

Scale: 1:45030 (13) Powered by Esri



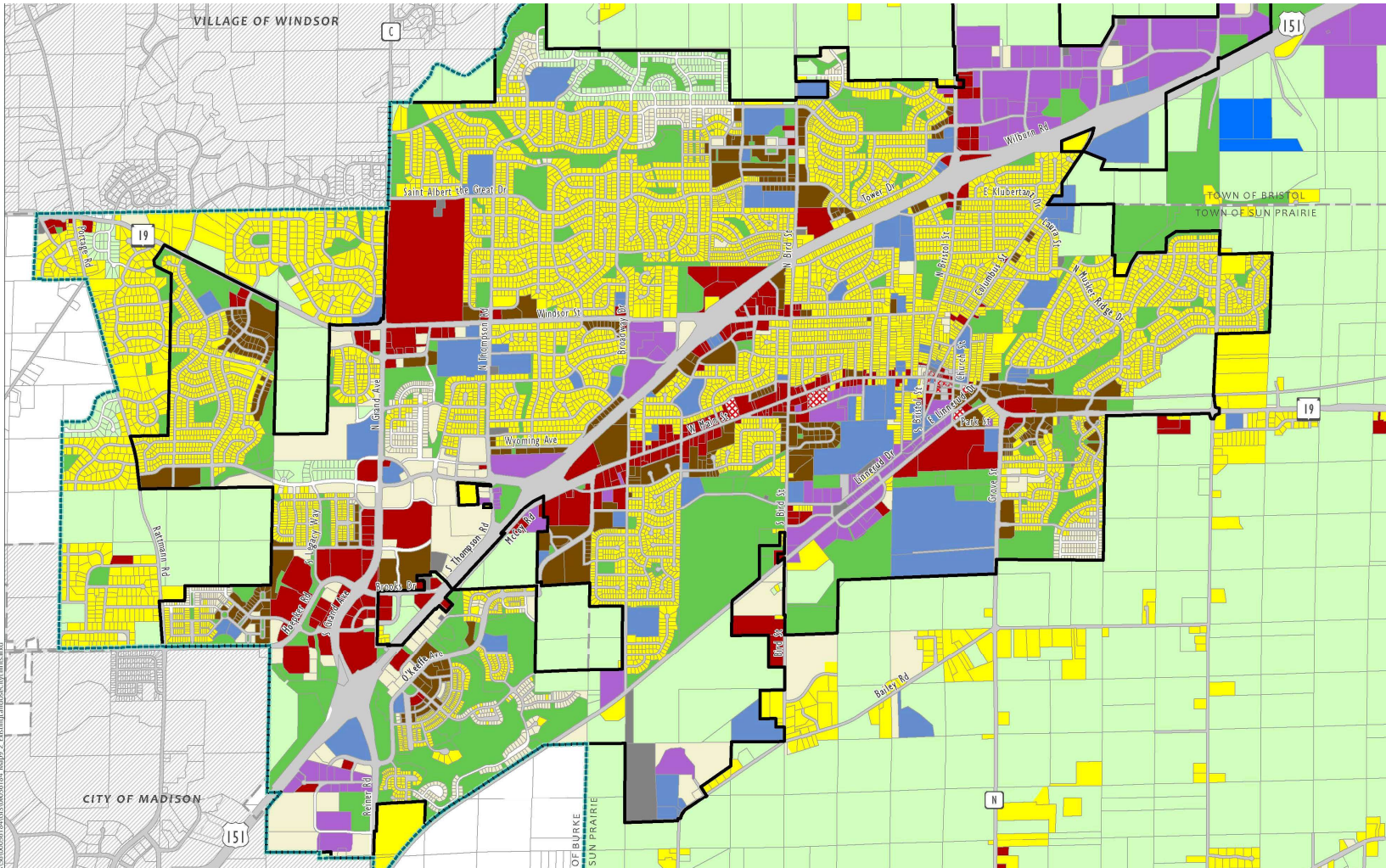
2024

Source: DCiMap

Scale: 1:45030 (13) Powered by Esri

Neighborhoods built before 2000 were built without sidewalks; without mixed-uses

Existing Land Use City Limits



- Planning Jurisdiction
- City of Sun Prairie
- City/Village
- Town
- Parcels
- Existing Land Use**
- Single and Two-Family Residential
- Multi-Family Residential
- Commercial/Office
- Industrial
- Institutional
- Mixed Use
- Parks and Open Space
- Utilities
- Transportation
- Agriculture
- Vacant Lot
- Water

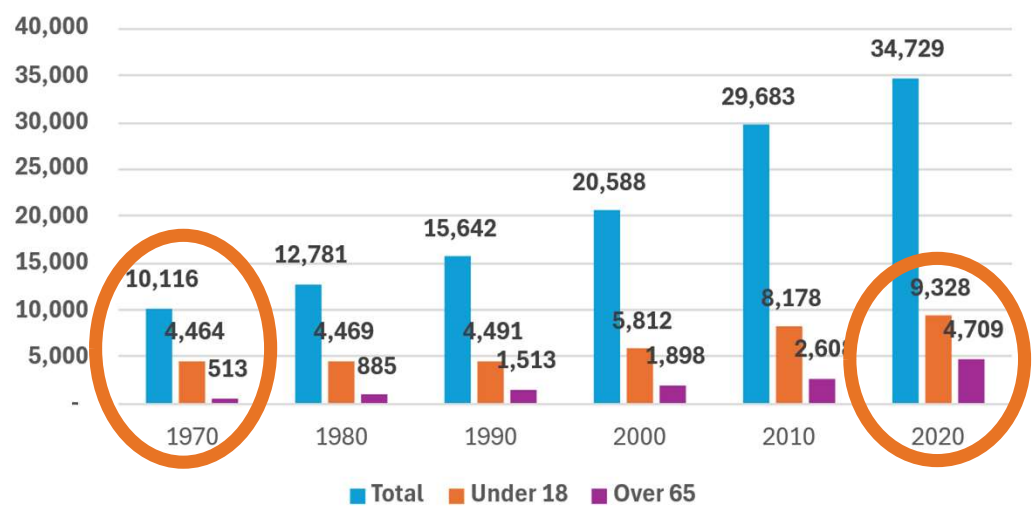
Data Sources:
Municipal Boundaries and road names
provided by Dane County (May 2018).
Existing Land Use provided by Dane County (2015).



Sun Prairie is growing older over time

Source: US CENSUS; IPUMS NHGIS, University of Minnesota, www.nhgis.org

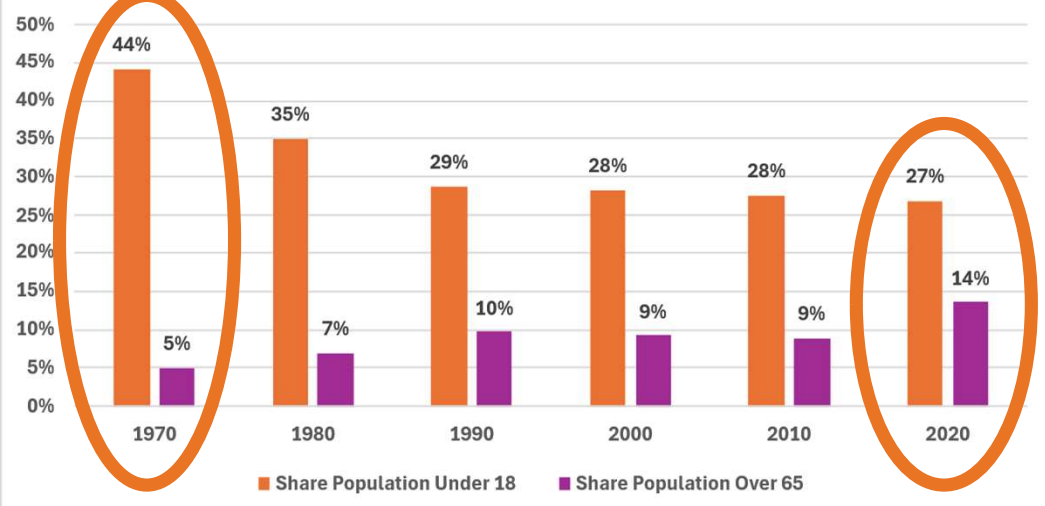
Total Population Change since 1970



Why these age groups?

- Youth are almost exclusively non-drivers
- Older adults aging into non-driving

Share of Total Population by Age Group since 1970



Sun Prairie's Strategy for Delivering Accessibility

1. Land Use reform
 1. Focusing development to centers and corridors
2. Transportation Options
 1. Including public transit service
3. Infrastructure
 1. Strengthening Active Transportation Network
 2. Complete Green Streets

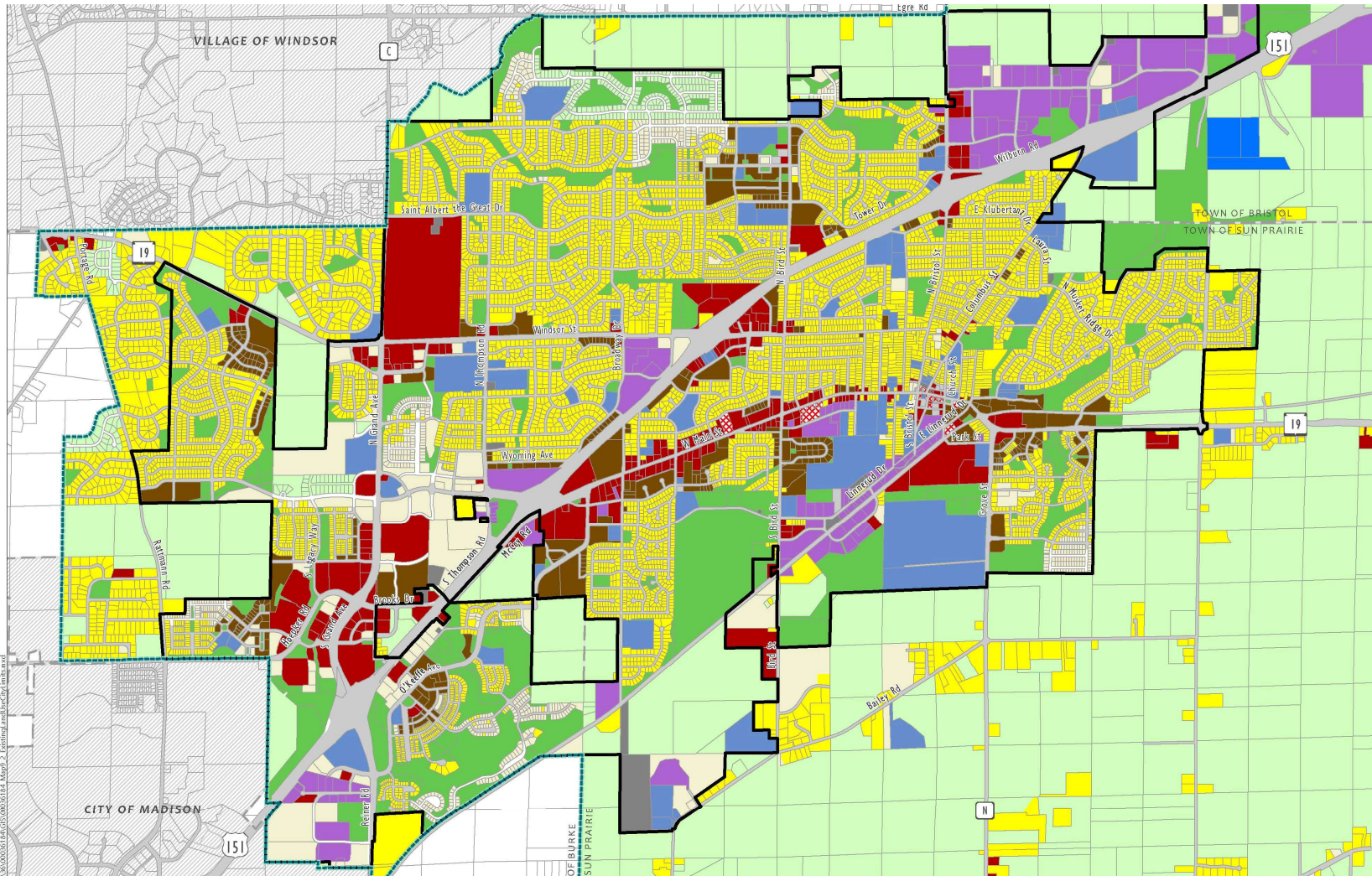


REIMAGINE SUN PRAIRIE

Zoning for a Bright Future for All

Upzoning low-density; encouraging more mixed use; allowing more housing by-right

Existing Land Use City Limits



- Planning Jurisdiction
- City of Sun Prairie
- City/Village
- Town
- Parcels
- Existing Land Use**
- Single and Two-Family Residential
- Multi-Family Residential
- Commercial/Office
- Industrial
- Institutional
- Mixed Use
- Parks and Open Space
- Utilities
- Transportation
- Agriculture
- Vacant Lot
- Water

Data Sources:
Municipal Boundaries and road names
provided by Dane County (May 2018).
Existing Land Use provided by Dane County (2015).

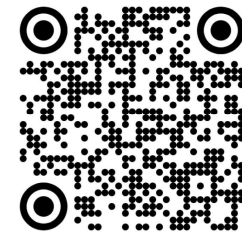


SUN PRAIRIE

Looking for options to get around?



Provides Bus and Paratransit Service



(608) 266-4466

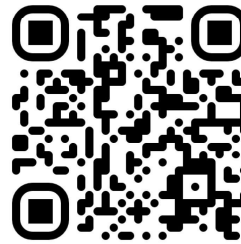
Madison Taxi



(608) 255-8294



 **union cab co-op**
READY WHEN YOU ARE



(608) 242-2000

Provides Cab Service in Sun Prairie



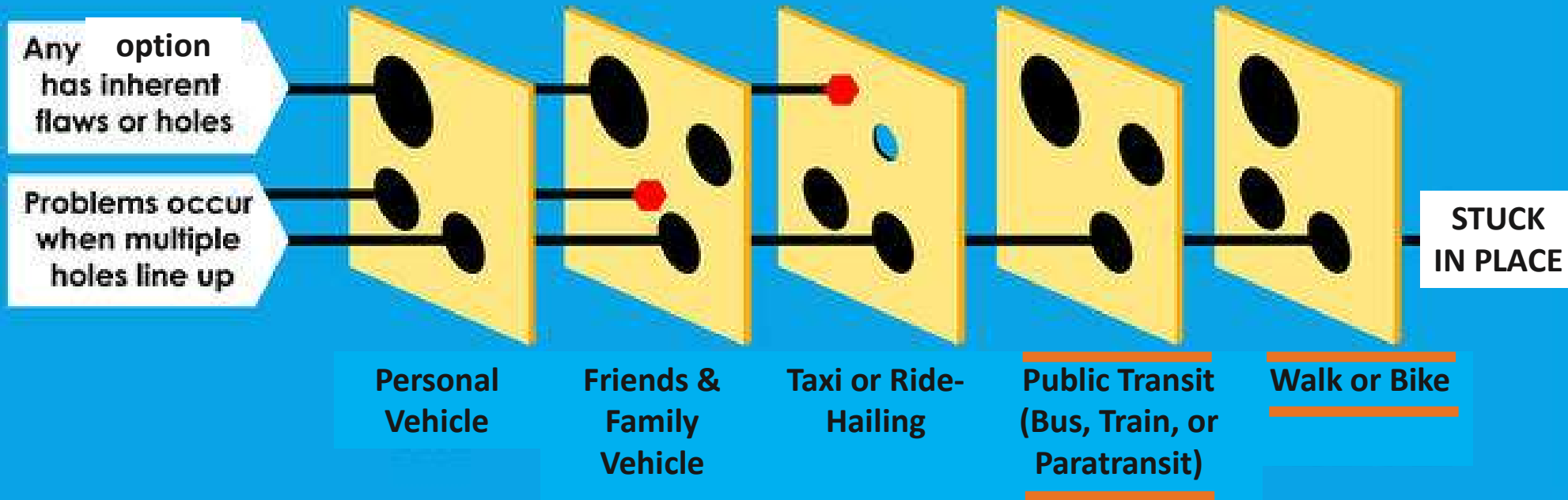
(608) 242-6489

Provides Transportation
for Older Residents



THE SWISS CHEESE MODEL

Transportation Options



Graphic Adapted from: Tampa Safe System Approach

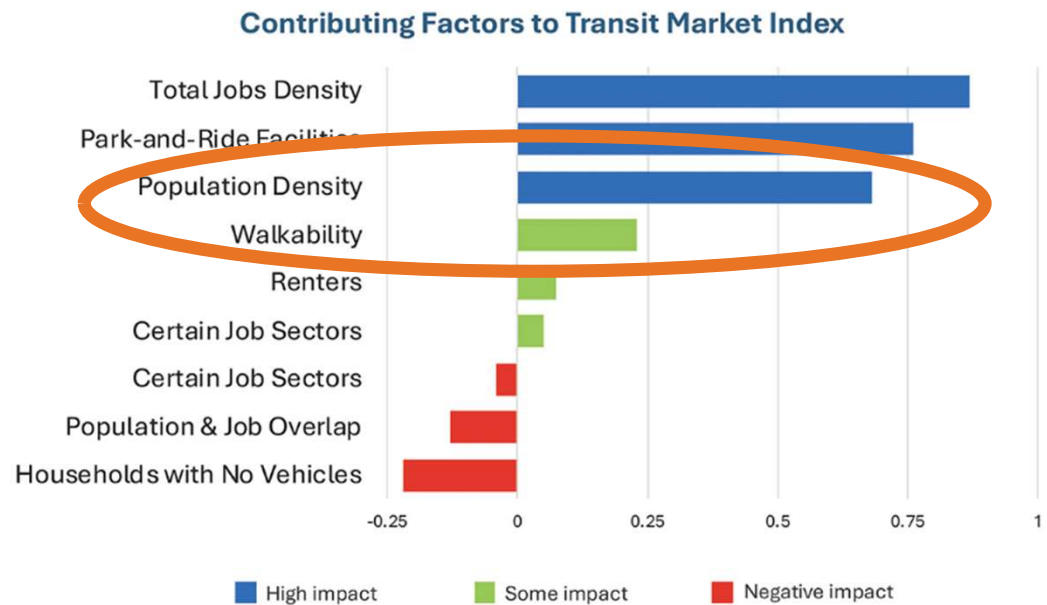
Users depend on safe pedways, bikeways, and intersections

Chicken and Egg problem between Land Use and Transportation Options



Figure 9.2: Contributing factors to transit market index

- Need density along corridors for successful transit
- Need transit options to encourage denser development

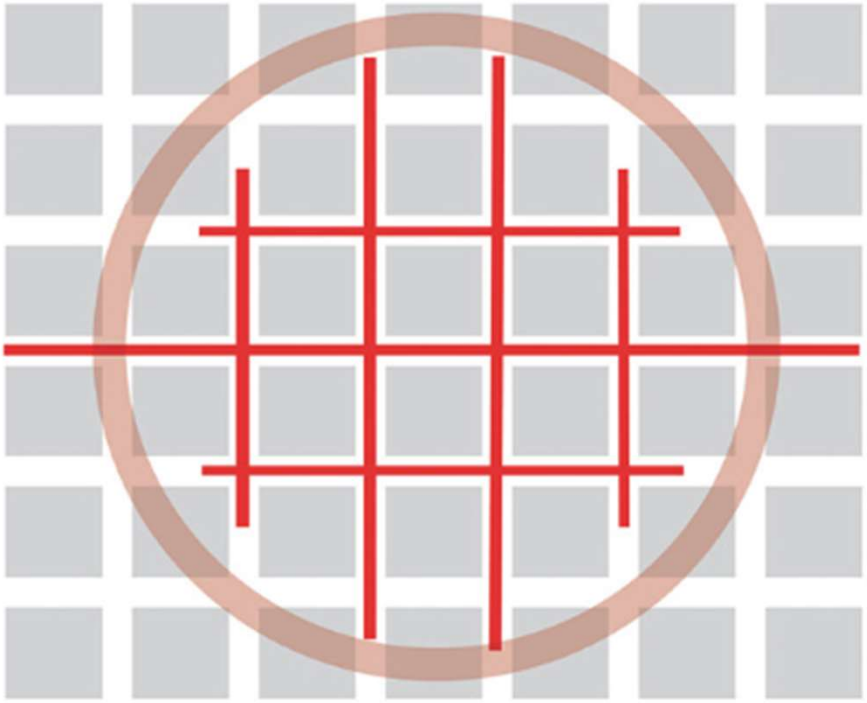


Source: Metro Council Regional Transit Design and Performance Guidelines (Minneapolis, St-Paul Metro)



Figure 9.5: Transit-supportive street network

More transit supportive



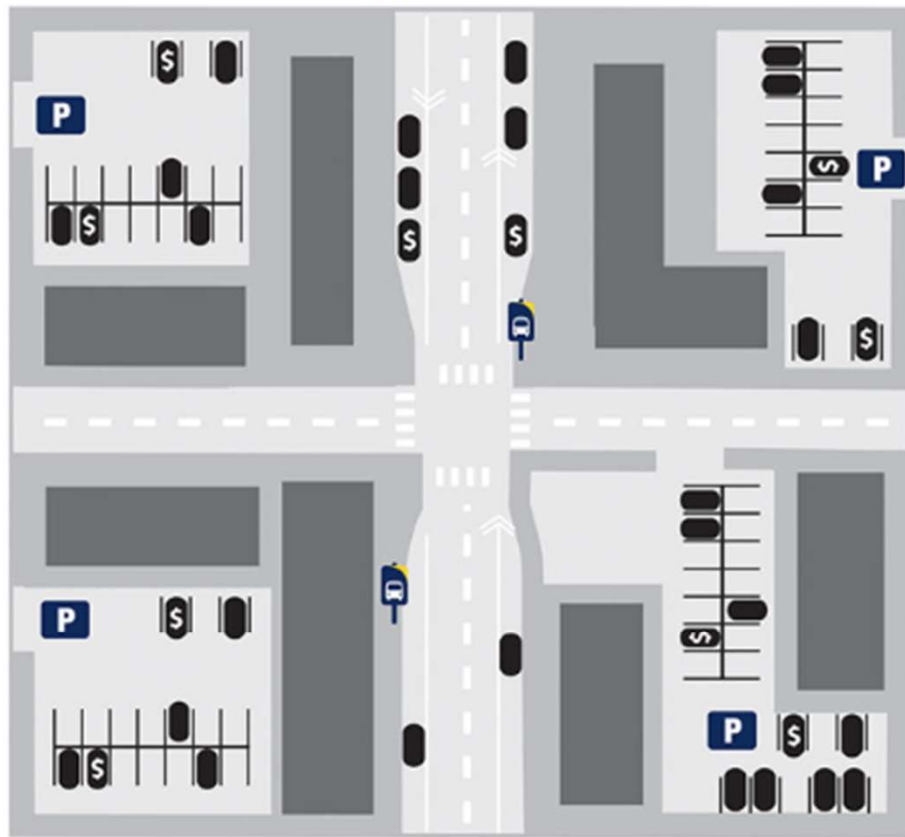
Less transit supportive



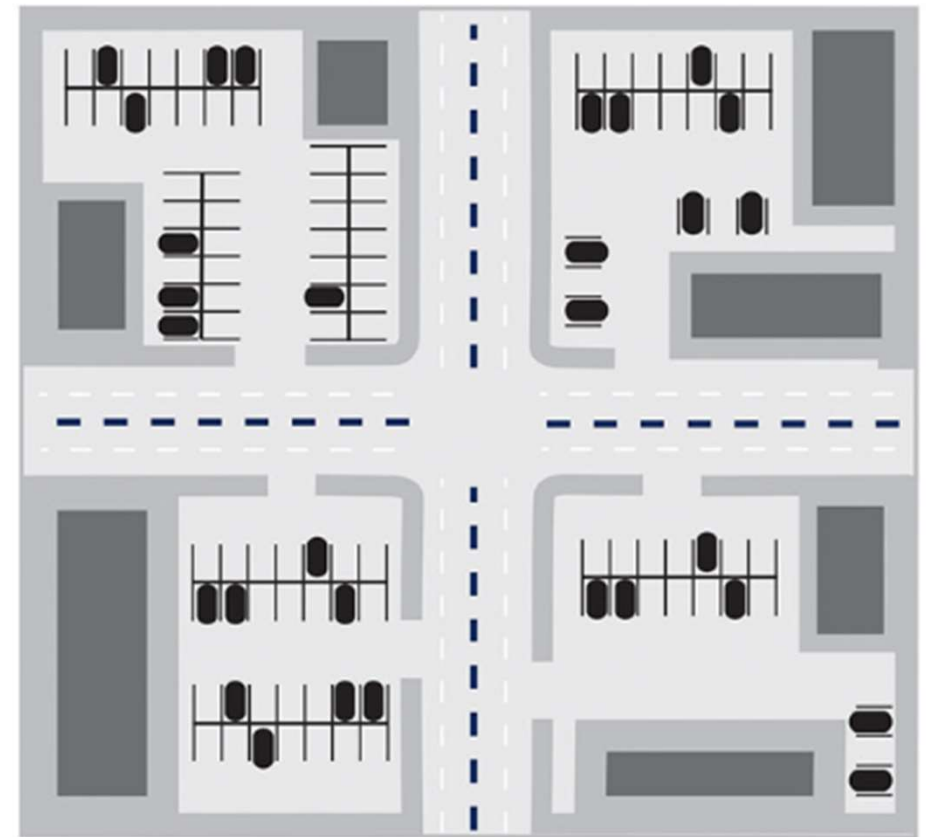
Source: Metro Council Regional Transit Design and Performance Guidelines (Minneapolis, St-Paul Metro)

Figure 9.9: Transit-supportive travel options

More transit supportive



Less transit supportive



Source: Metro Council Regional Transit Design and Performance Guidelines (Minneapolis, St-Paul Metro)

The background is a solid teal color with several abstract, rounded shapes in a lighter shade of teal scattered across it. These shapes include straight lines, curved lines, and semi-circles, some of which are partially cut off by the edges of the frame.

Strengthening the network for Active Transportation

SUN PRAIRIE IN MOTION

ACTIVE TRANSPORTATION PLAN

FINAL DRAFT

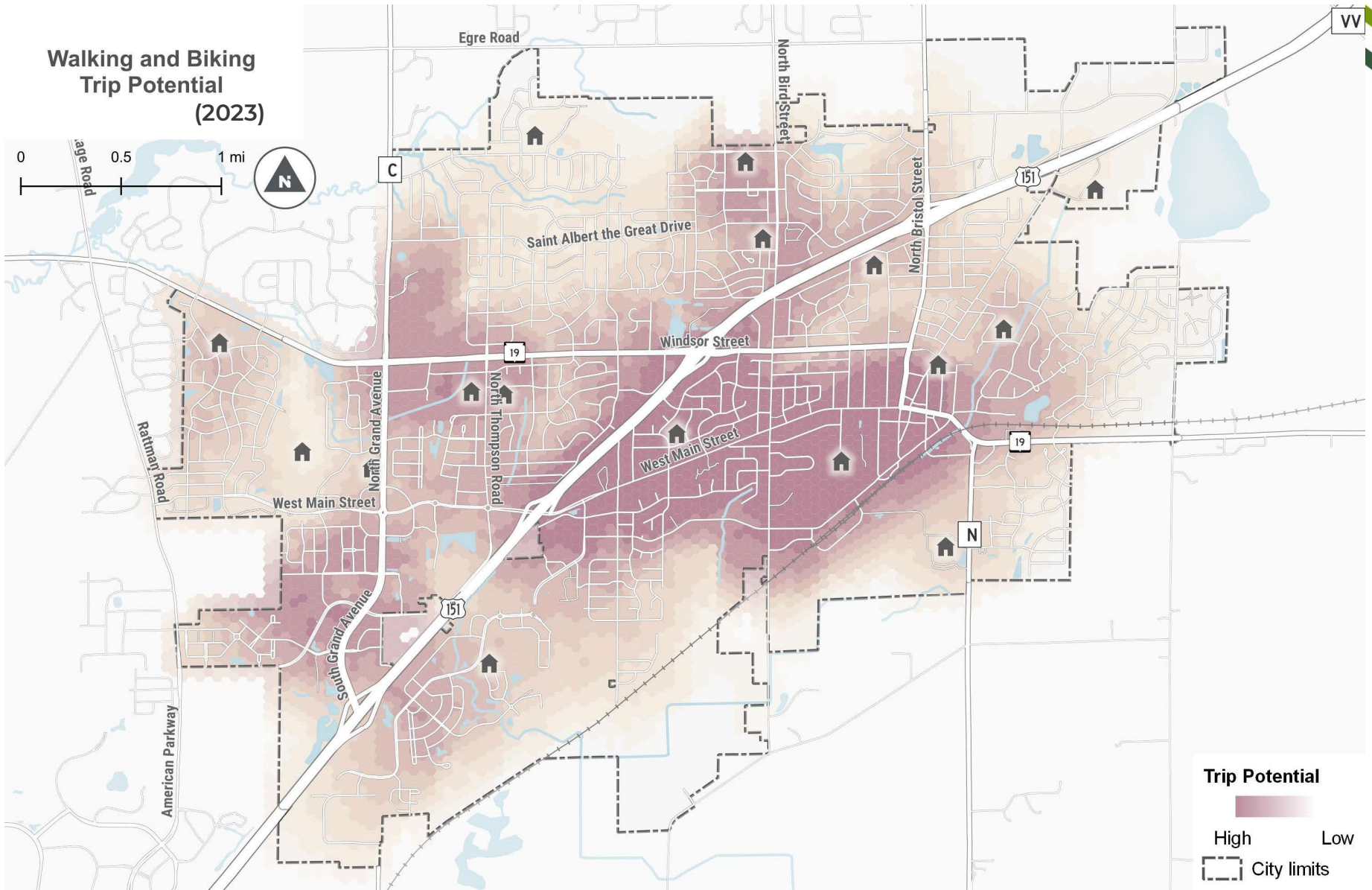


Adopted in 2023,
this plan is a
guidebook and
policy document.

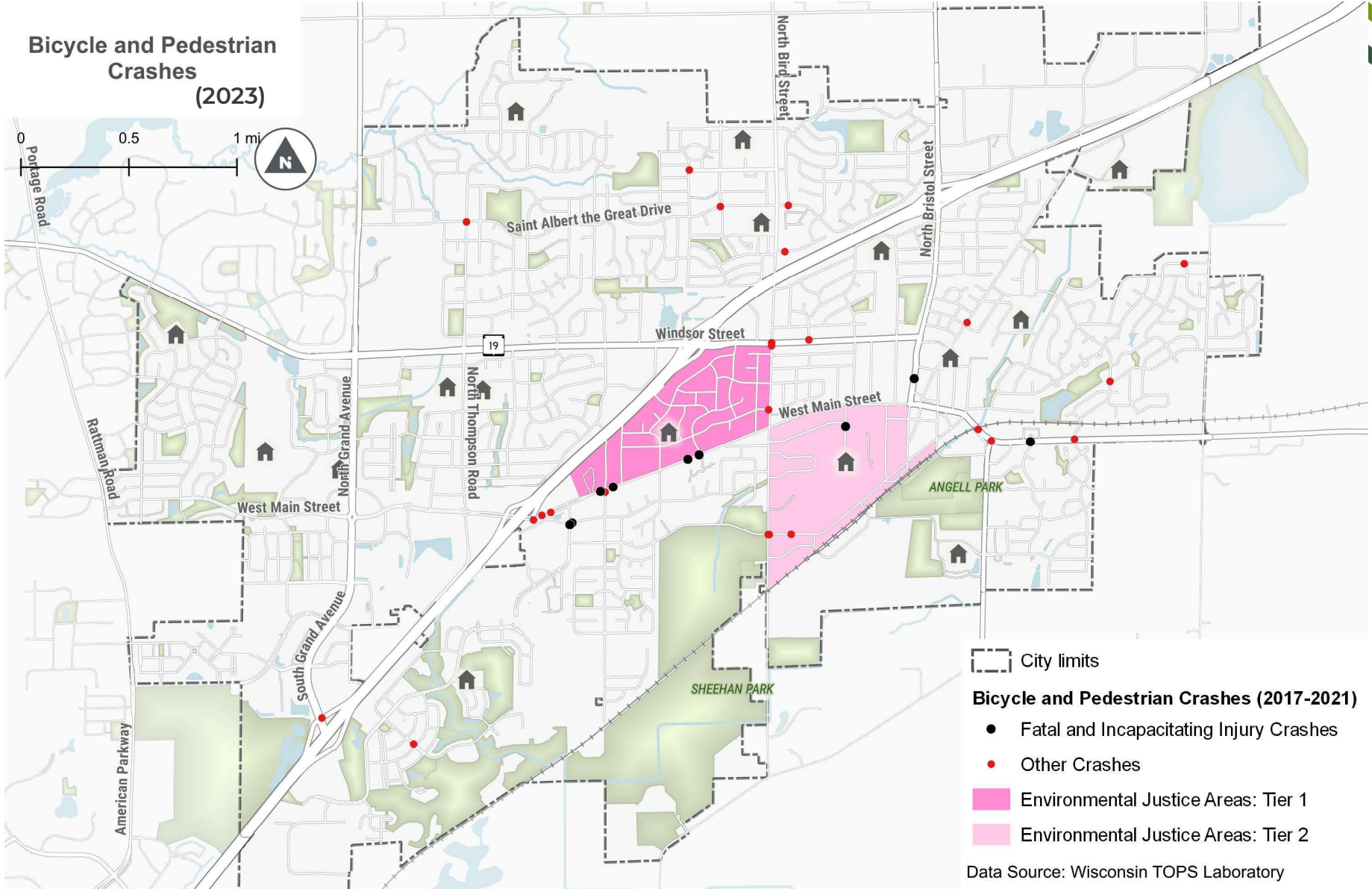
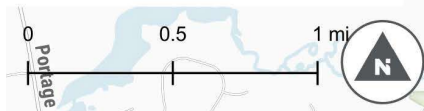
Vision

Sun Prairie has safe walking, biking, and rolling paths that connect all residents to the places they want and need to go.

Walking and Biking Trip Potential (2023)



Bicycle and Pedestrian Crashes (2023)



- City limits
- Bicycle and Pedestrian Crashes (2017-2021)**
 - Fatal and Incapacitating Injury Crashes
 - Other Crashes
 - Environmental Justice Areas: Tier 1
 - Environmental Justice Areas: Tier 2

Data Source: Wisconsin TOPS Laboratory





4 FACILITY SELECTION AND DESIGN TOOLKIT

30



Goal 1: Increase Walking and Biking



Related Principles:

- **Close gaps in the sidewalk and bikeway networks**
- **Prioritize walking, biking, and transit over motor vehicles in street design**

Goal 2: Improve Safety



Related Principles:

- **Design for children walking and biking to school and activities**
- **Use data to identify where safety infrastructure is most needed**

Goal 3: Promote Equity

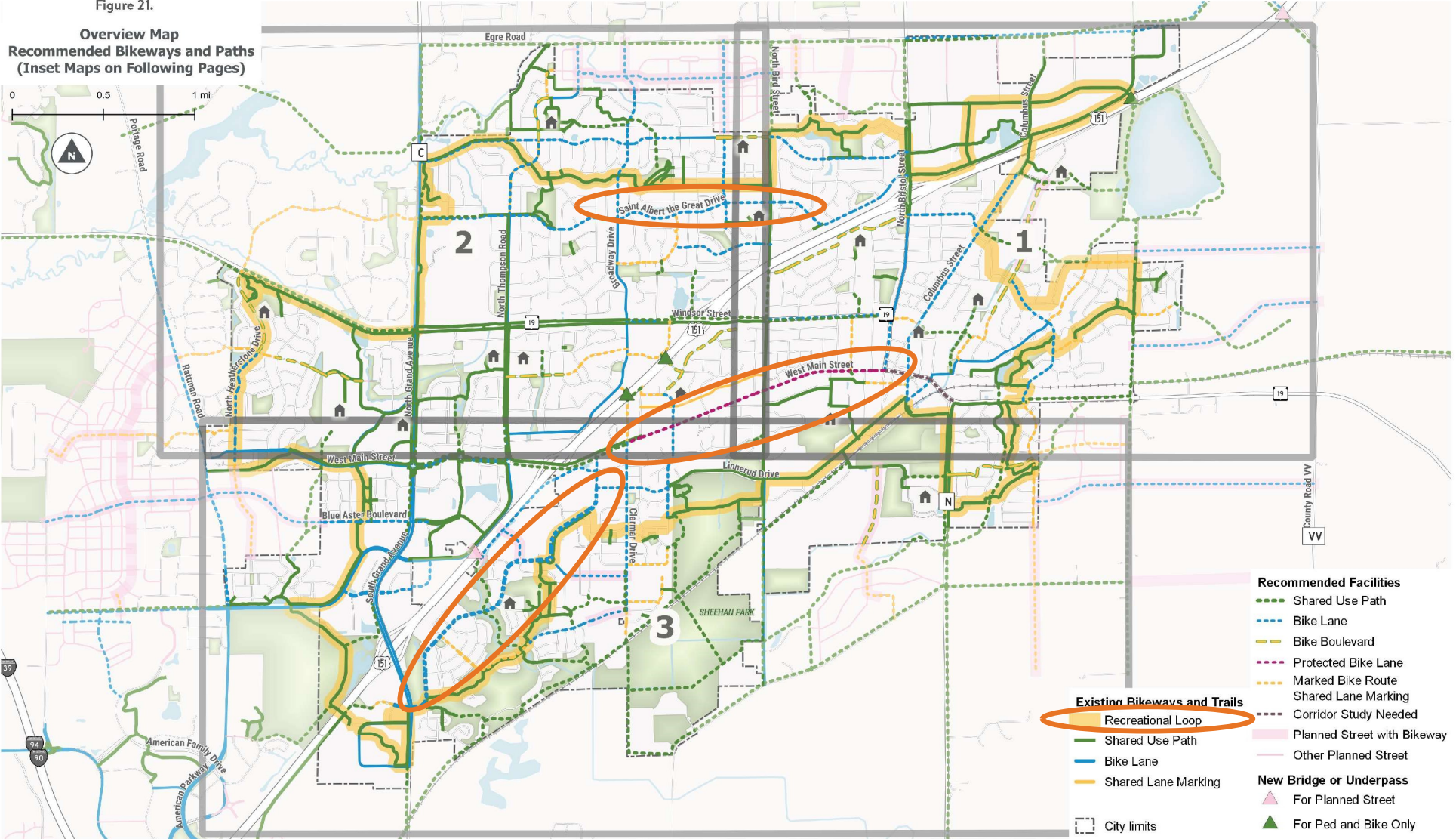


Related Principles:

- **Focus on equity areas where people with barriers to transportation live and work**
- **Be inclusive: provide facilities and programs where everyone feels welcome**

Figure 21.

**Overview Map
Recommended Bikeways and Paths
(Inset Maps on Following Pages)**



- | | |
|-------------------------------------|-----------------------------|
| Recommended Facilities | |
| | Shared Use Path |
| | Bike Lane |
| | Bike Boulevard |
| | Protected Bike Lane |
| | Marked Bike Route |
| | Shared Lane Marking |
| | Corridor Study Needed |
| | Planned Street with Bikeway |
| | Other Planned Street |
| Existing Bikeways and Trails | |
| | Recreational Loop |
| | Shared Use Path |
| | Bike Lane |
| | Shared Lane Marking |
| New Bridge or Underpass | |
| | For Planned Street |
| | For Ped and Bike Only |
| | City limits |



The background is a solid teal color. It features several abstract, rounded shapes in a slightly lighter shade of teal. On the left side, there are several vertical and diagonal bars of varying lengths. On the right side, there are several curved, arc-like shapes that resemble parts of a circle or a stylized 'C'.

Designing Complete Streets

Sun Prairie has been building Complete Streets



Before

Thompson Rd Project (2025):

- 26% reduction in 50th percentile speeds*
- 12% reduction in 85th percentile speeds*
- 54% reduction in Maximum speed

After



Sun Prairie has been building Complete Streets



N Bird St at Summit Ave



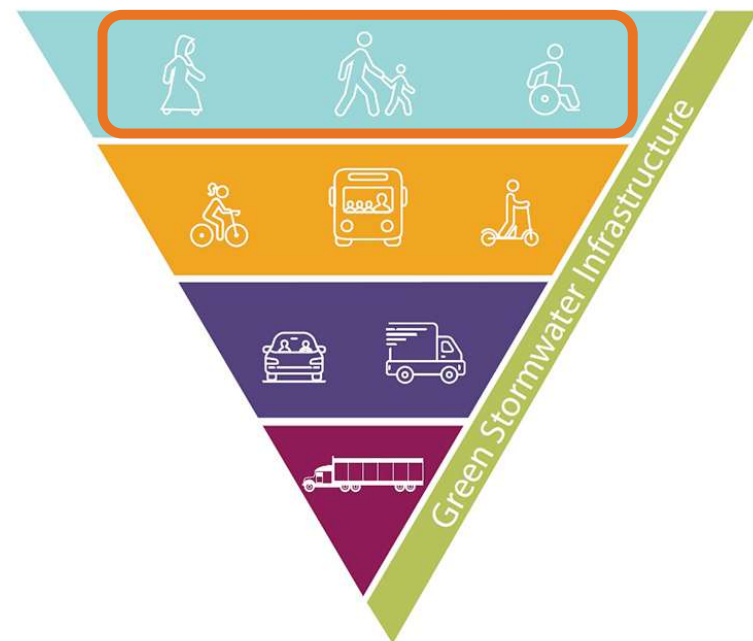
N Bird St
Shared Use Path
Key N-S Backbone for
City's Bikeway Network

Looking to NACTO peers to develop a Complete Streets Policy and Guide

- Transparency and consistency in street design approach
- Prioritizing young people, aging adults, and people with disabilities
- Flexibility in parking / curb / terrace area to prioritize traffic calming, sidewalks, and pedestrian/bike safety



Source: City of Madison – Complete Green Streets Modal Hierarchy



Source: City of Minneapolis – Complete Streets Modal Hierarchy



**Feel free to reach out
with any questions,
comments, or discussion**

David Salmon

dsalmon@cityofsunprairie.com

608-825-0859

